



AGENDA 11 MAY TO 22 MAY

Monday 11 May.	Welcome back group A Theme lower grades: Sil has long hair VLL kern 9 (repetition): How is that possible. All apart week 11 and 12: information sources, the letter.
Tuesday 11 May.	Welcome back to school group B Youth worker Jamilla present from 13.00 to 17.00 h.
Thursday 12 May.	MR- meeting through Zoom from 16:00-17:30 h.
Friday 13 May.	Youth worker Jamilla present from 13.00 to 17.00 h.
Monday 18 May.	Theme lower grades: Sil has long hair VLL kern 9 (repetition) and exams: How is that possible. All apart week 12 and 13: Belief or superstition, famous people.
Thursday 21 May	Ascension day- everyone is off.
Friday 22 May.	Day off for everyone

WELCOME BACK TO SCHOOL

The moment is finally here. Our school is opening its doors again and we cannot wait to see our students again. However, this does not mean that everything is immediately back to how it once was. There are many rules and precautions that we will have to follow to prevent the corona virus from spreading. We will discuss these rules with our students and ask parents to do the same.

Parents may say goodbye to their child(ren) in front of the fence and wait for their child(ren) in front of the fence after school. Adults must observe the 1.5-meter distance. Our toddlers, preschoolers and group 3 students are guided from the gate to the classroom by one of our colleagues. Furthermore, other colleagues will ensure that all children go to their class safely.

Within the school, walking routes are indicated in one-way traffic, both pupils and all colleagues must adhere to this. Prepare your child for this.

Only bring your child to school on the days they are assigned to. Group A or group B, you have received an overview from your child's teacher. Children of parents in vital professions who already use the emergency shelter can receive extra care. If this is needed, please message your child's teacher.

All broad school activities are canceled. The school days are from 8.30-14.15. Jamila, the youth worker, is present on Tuesdays and Fridays. Only children who previously stayed with Jamila can now visit her until 17.00. They will be doing many of their activities outside, as much as possible.

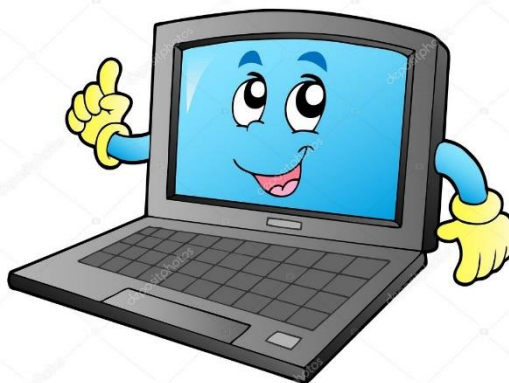
Are you late and is the school door closed? Please wait outside the gate and contact us through the school phone, we will pick up your child. If your child can ring the doorbell independently, that is also allowed, you are not allowed to enter the schoolyard.

All joint decisions were made in consultation with the Crescendo primary school and Our World (onze wereld). Do you have any questions and/or concerns about bringing your child to school? Please discuss this with the teacher or the principal. We will have to register children who are absent without deregistration from compulsory education.

DEVICES

Because we are open for 50% and the students continue to work independently according to their weekly tasks, the laptops and iPads can still be used on loan.

As soon as school opens completely, you will receive more information about handing in these devices. Google Hangout and Classroom remain leading for working from home.



STAFF

Mr. Fabian has worked for the Blauwe Lijn for many years with love and dedication but has decided to continue his career in a secondary school. We are very happy for him and wish him lots of success! We have now found a new P.E. teacher! Ms. Lisette is a young teacher who will shape P.E. education for 3 days alongside Mr. Sem.

Some movement will take place in the substructure. Ms. Marion now teaches group 1/2b for 5 days. Ms. Marion will soon have to undergo knee surgery; this means that she will no longer be able to teach. The groups will be staffed differently. We have welcomed a new colleague for the lower grades. Ms. Kana will be teaching group 1/2c with Ms. Marjolein and Ms. Sinead.

Below an overview of the groups:

Groups	Monday	Tuesday	Wednesday	Thursday	Friday
1/2A	Judith	Judith	Judith	Judith/ Rachel Post	Rachel Post/ Willeke
1/2B	Marion/ Lidwien/Rachel Wong	Marion/ Lidwien/Rachel Wong	Marion/Shirley	Marion/Shirley/ Rachel Wong	Lidwien/ Rachel Wong
1/2C	Kana	Kana	Marjolein	Marjolein	Sinead

Ms. Sinead will be supporting group 1/2a and 1/2b on Monday, Tuesday and Thursday
 Ms. Willeke will be present to ensure a warm transfer for the toddlers.

We will only be able to control the virus together!

